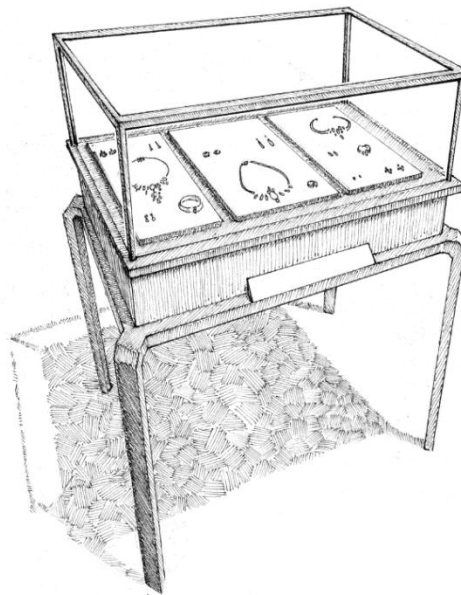


# K01 - THE BILLIONAIRE CRUISE

LEVEL: AMATEUR



This Mediterranean cruise is exceptional in more ways than one. The luxury suite and six of the VIP cabins are occupied by seven of the wealthiest people in the world. These billionaires have all agreed to exhibit their very expensive pieces of jewelry in the theater for the entire duration of the cruise. As you might expect, the room is well-guarded.

In addition, two dramatic incidents have occurred in close succession. Yesterday afternoon, the purser was found in the hold of the ship. He was undoubtedly murdered... Then, this morning **Max "Perry" Williams**, one of the billionaires and organizer of the exhibition, was found dead in his luxury suite.

To make matters worse, the ship has experienced engine failure. With the help of the police, tugboats will be towing the boat to the port of Barcelona, Spain.

## SPECIAL RULES FOR THIS CASE

- During setup, place the **deck of Event cards**, the **Ship pawn**, the **Purser pawn** and the **6 suspects marked "G" to "L"** back in the box. They will not be used.
- Since there is no timer, **limit the game to around 60 minutes**.
- Place each of the **6 remaining suspects** randomly in **zones 4 to 9**.
- Before the game starts, **the players cross out the 24 options that can't be used during the game** on their case sheets: the 3 conversation subjects and the cabins of each of the 6 suspects marked "G" to "L".

# K02 - PIRATES!

LEVEL: AMATEUR



As the ship was sailing towards the Seychelles yesterday, it was hijacked by Somali pirates! Their goal: to kidnap rich tourists and hold them for ransom. After firing some warning shots into the air, they found everyone on board to be quite cooperative. The pirates took 6 VIP passengers with them, as well as the purser who had tried to intervene. Before leaving, they also stole some fuel and sabotaged the engines. A distress call was sent out. The cruise ship is now drifting aimlessly, waiting for help which should be arriving at dusk.

However, another dramatic event took place this morning: the bodies of **Hans and Andrea Grungrass** were discovered in the luxury suite. It seems that the husband managed to hide during the hijacking and briefly reappeared around 9 pm yesterday night, shortly after the pirates had left.

## SPECIAL RULES FOR THIS CASE

- During setup, place the **deck of Event cards**, the **Ship pawn**, the **Purser pawn** and the **6 suspects marked "G" to "L"** back in the box. They will not be used.
- Since there is no timer, **limit the game to around 60 minutes**.
- Place each of the **6 remaining suspects** randomly in **zones 4 to 9**.
- Before the game starts, **the players cross out the 24 options that can't be used during the game** on their case sheets: the 3 conversation subjects and the cabins of each of the 6 suspects marked "G" to "L".

# K03 - THE EPIDEMIC

LEVEL: AMATEUR



After the ship's last stop in Madagascar, an epidemic broke out on board. Several passengers have since died, among them a number of VIP passengers residing on the upper deck. Their bodies are currently in the cold storage room in the hold and no one is allowed access. All of the available antibiotics have been administered, and the epidemic seems to be under control. The ship is currently sailing towards the port of Colombo in Sri Lanka, where it will be placed under quarantine.

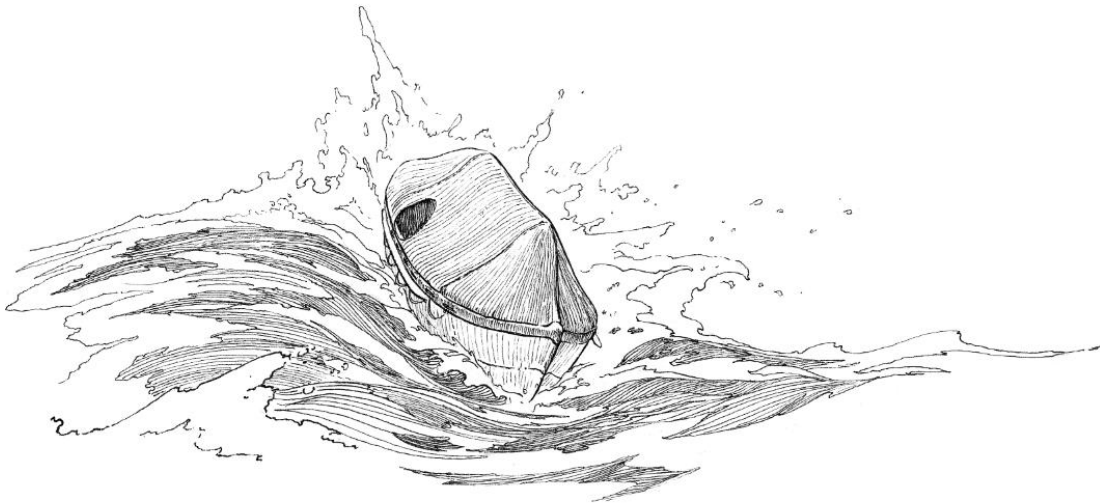
But a suspicious rumor has come to the attention of the detectives who are attending a convention on board. Last night's death of **Lucy Sky**, who was staying in suite 13, might have been the result of foul play...

## SPECIAL RULES FOR THIS CASE

- During setup, place the **6 suspects marked "G" to "L" back in the box**. They will not be used.
- Place each of the **6 remaining suspects** randomly in **zones 4 to 9**.
- Before the game starts, **the players cross out the 24 options that can't be used during the game** on their case sheets: the 3 conversation subjects and the cabins of each of the 6 suspects marked "G" to "L".

# K04 - ADRIFT

LEVEL: AMATEUR



This morning, two unusual events were reported to the passengers.

To begin with, one of the lifeboats was lowered into the water during the night, in the middle of a storm! Six VIP passengers were reported missing: we assume they boarded the lifeboat. The captain has sent out a missing persons report over the radio. The lifeboat has a beacon on board. If it survived the storm, it should be found fairly quickly.

Furthermore, **Isabella Baron**, a 45-year-old Italian lady, was found dead in her luxury suite.

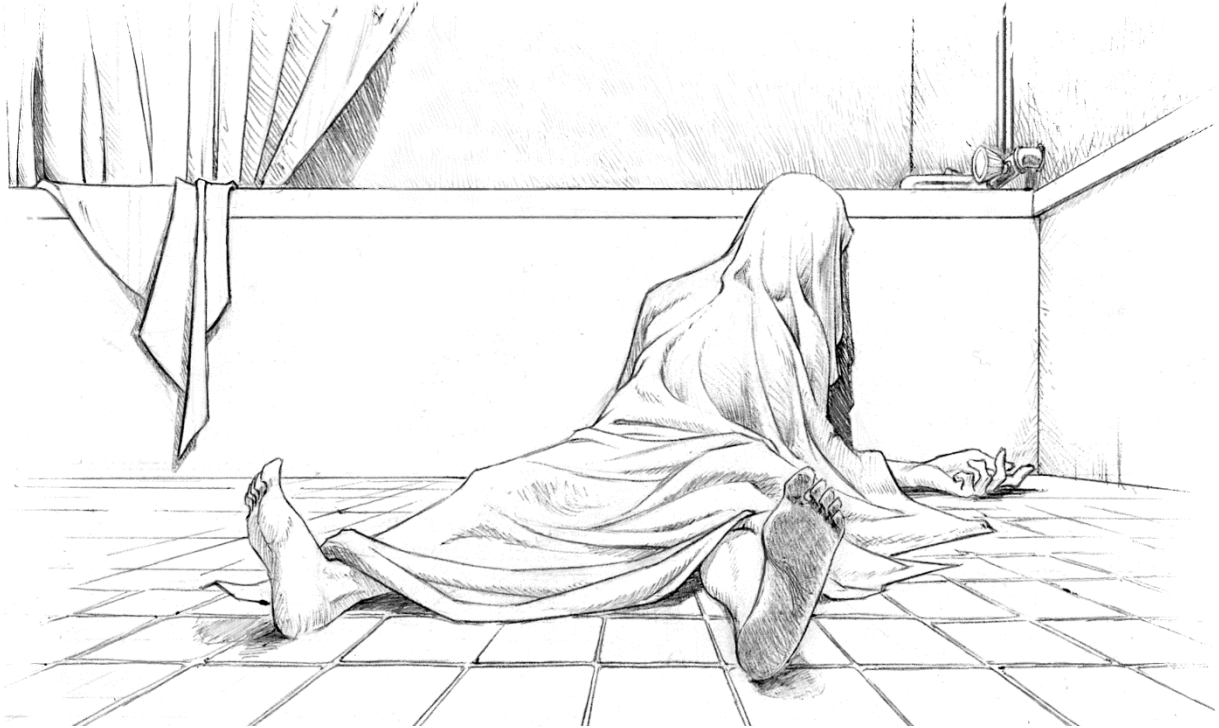
It's up to the detectives to tie the strings together, as soon as some of them have overcome their seasickness...

## SPECIAL RULES FOR THIS CASE

- During setup, place the **6 suspects marked "G" to "L" back in the box**. They will not be used.
- Place each of the **6 remaining suspects** randomly in **zones 4 to 9**.
- Before the game starts, **the players cross out the 24 options that can't be used during the game** on their case sheets: the 3 conversation subjects and the cabins of each of the 6 suspects marked "G" to "L".

# K05 - NOT MY CUP OF TEA

LEVEL: EXPERT



Currently, the cruise ship is sailing along the coast of Scandinavia.

This morning, the lifeless body of **Damien Lenoir** was found in the bathroom of suite 13 - the luxury suite. Was it an accident, a suicide, or a murder?

On board, a number of detectives are holding a convention. They've decided to dive headlong into this case...

# K06 - DOUBLE GEAR

LEVEL: EXPERT



Record producer **Marco Toscani** was found dead in his luxury suite! The body was discovered at 2.30 am by the victim's wife and the purser, after she asked him to open the door. Soon after, the body was moved to the infirmary.

Vera Toscani, who is not on the suspect list, broke down and is trying to recover in her suite. The captain suggests the detectives visit the widow once she is feeling a little better, and then come to the wheelhouse to discuss the situation.

# K07 - THE BACKGAMMON TOURNAMENT

LEVEL: EXPERT



The French national backgammon championships are taking place on board! The best players in the country are here, and they're all staying in cabins on the upper deck.

Yesterday afternoon, the reigning champion **Nicolas Modeste** came to see the detectives. He told them he received an anonymous letter that he left in his suite, stating he would be dead by midnight. The detectives assured him it was probably just a bad joke on behalf of one of his opponents.

However, Nicolas Modeste didn't show up for his game against ANDY in the theater this morning. He's nowhere to be found... Did he disappear from the ship?

## SPECIAL RULES FOR THIS CASE

- In contrast to the other cases, at the beginning of the game **no body** was found in suite 13...
- We recommend using the 'Case Elements Reminder' section of the Deduction sheet to help with note-taking.
- It is **forbidden to go into the hold during the 1st round**, and the Event card INFORMANT has no effect.
- At the start of the **2nd round**, **do not turn over any Event cards** and **place the Purser in zone 10**. Then, **read aloud the path of the hold**.

# K08 - VICE VERSA

LEVEL: EXPERT



**Hyppolite Montiel** was found dead in his suite!

The 40-year-old television host had striking good looks, and was notorious for his love of jet-setting. He was known as an egocentric seducer, which means a scorned woman or a jealous husband might prove to be excellent suspects...

The detectives residing on board simply cannot resist the temptation of this unexpected investigation.

**CAUTION: MATURE CONTENT**



# K09 - A SWAN ON THE OCEAN

LEVEL: EXPERT



Like a boat crossing an underground lake, the cruise ship silently cuts through the nocturnal waters. Although on board, a drama has just unfolded...

The cast of the contemporary opera *The Silver Swan* occupies the VIP cabins. Last night, their final performance took place on the theater stage, because the curtain has permanently fallen. Around midnight, four VIP passengers informed the captain of the tragic death of **Richard Lohengrin**, who performs the title role of the Swan Knight. His body was found in his suite.

Now it's time for the detectives to enter the scene...